

Acta Crystallographica Section E

## Structure Reports

Online

ISSN 1600-5368

## 2,4-Dichloro-*N*-(2,4-dimethylphenyl)-benzenesulfonamide

Vinola Z. Rodrigues,<sup>a</sup> Sabine Foro<sup>b</sup> and B. Thimme Gowda<sup>a\*</sup>

<sup>a</sup>Department of Chemistry, Mangalore University, Mangalagangothri 574 199, Mangalore, India, and <sup>b</sup>Institute of Materials Science, Darmstadt University of Technology, Petersenstrasse 23, D-64287 Darmstadt, Germany  
Correspondence e-mail: gowdabt@yahoo.com

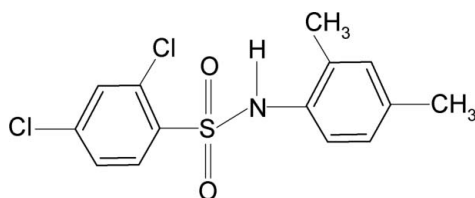
Received 14 September 2011; accepted 24 September 2011

Key indicators: single-crystal X-ray study;  $T = 293$  K; mean  $\sigma(\text{C}-\text{C}) = 0.007$  Å;  $R$  factor = 0.075;  $wR$  factor = 0.143; data-to-parameter ratio = 16.2.

In the title compound,  $\text{C}_{14}\text{H}_{13}\text{Cl}_2\text{NO}_2\text{S}$ , the  $\text{C}-\text{SO}_2-\text{NH}-\text{C}$  torsion angle is  $-71.4$  (4)°. The sulfonyl and aniline benzene rings are tilted relative to one another by  $44.6$  (1)°. The crystal structure features inversion-related dimers linked by pairs of  $\text{N}-\text{H}\cdots\text{O}$  hydrogen bonds.

### Related literature

For the preparation of the title compound, see: Savitha & Gowda (2006). For hydrogen-bonding modes of sulfonamides, see: Adsmoind & Grant (2001). For our studies on the effects of substituents on the structures and other aspects of *N*-(aryl)-amides, see: Arjunan *et al.* (2004); Gowda *et al.* (2000), on *N*-(aryl)-methanesulfonamides, see: Gowda *et al.* (2007) and on *N*-(aryl)-arylsulfonamides, see: Gelbrich *et al.* (2007); Perlovich *et al.* (2006); Gowda *et al.* (2005); Rodrigues *et al.* (2011).



### Experimental

#### Crystal data

$\text{C}_{14}\text{H}_{13}\text{Cl}_2\text{NO}_2\text{S}$   
 $M_r = 330.21$   
Monoclinic,  $P2_1/n$   
 $a = 8.2127$  (7) Å  
 $b = 12.619$  (1) Å

$c = 14.284$  (1) Å  
 $\beta = 90.434$  (8)°  
 $V = 1480.3$  (2) Å<sup>3</sup>  
 $Z = 4$   
Mo  $K\alpha$  radiation

$\mu = 0.58$  mm<sup>-1</sup>  
 $T = 293$  K

$0.28 \times 0.18 \times 0.04$  mm

#### Data collection

Oxford Diffraction Xcalibur diffractometer with a Sapphire CCD detector  
Absorption correction: multi-scan (*CrysAlis RED*; Oxford)

Diffraction, 2009)  
 $T_{\min} = 0.855$ ,  $T_{\max} = 0.977$   
5678 measured reflections  
3007 independent reflections  
1908 reflections with  $I > 2\sigma(I)$   
 $R_{\text{int}} = 0.038$

#### Refinement

$R[F^2 > 2\sigma(F^2)] = 0.075$   
 $wR(F^2) = 0.143$   
 $S = 1.20$   
3007 reflections  
186 parameters  
1 restraint

H atoms treated by a mixture of independent and constrained refinement  
 $\Delta\rho_{\text{max}} = 0.40$  e Å<sup>-3</sup>  
 $\Delta\rho_{\text{min}} = -0.41$  e Å<sup>-3</sup>

**Table 1**

Hydrogen-bond geometry (Å, °).

| $D-H\cdots A$                           | $D-H$    | $H\cdots A$ | $D\cdots A$ | $D-H\cdots A$ |
|---|----------|-------------|-------------|---------------|
| $\text{N1}-\text{H1N}\cdots\text{O2}^i$ | 0.86 (2) | 2.23 (2)    | 3.059 (5)   | 164 (4)       |

Symmetry code: (i)  $-x, -y, -z + 1$ .

Data collection: *CrysAlis CCD* (Oxford Diffraction, 2009); cell refinement: *CrysAlis RED* (Oxford Diffraction, 2009); data reduction: *CrysAlis RED*; program(s) used to solve structure: *SHELXS97* (Sheldrick, 2008); program(s) used to refine structure: *SHELXL97* (Sheldrick, 2008); molecular graphics: *PLATON* (Spek, 2009); software used to prepare material for publication: *SHELXL97*.

VZR thanks the University Grants Commission, Government of India, New Delhi, for the award of a RFSMS fellowship.

Supplementary data and figures for this paper are available from the IUCr electronic archives (Reference: DS2145).

### References

- Adsmoind, D. A. & Grant, D. J. W. (2001). *J. Pharm. Sci.* **90**, 2058–2077.  
Arjunan, V., Mohan, S., Subramanian, S. & Gowda, B. T. (2004). *Spectrochim. Acta Part A*, **60**, 1141–1159.  
Gelbrich, T., Hursthouse, M. B. & Threlfall, T. L. (2007). *Acta Cryst.* **B63**, 621–632.  
Gowda, B. T., Foro, S. & Fuess, H. (2007). *Acta Cryst.* **E63**, o2337.  
Gowda, B. T., Shetty, M. & Jayalakshmi, K. L. (2005). *Z. Naturforsch. Teil A*, **60**, 106–112.  
Gowda, B. T., Svoboda, I. & Fuess, H. (2000). *Z. Naturforsch. Teil A*, **55**, 779–790.  
Oxford Diffraction (2009). *CrysAlis CCD* and *CrysAlis RED*. Oxford Diffraction Ltd, Yarnton, England.  
Perlovich, G. L., Tkachev, V. V., Schaper, K.-J. & Raevsky, O. A. (2006). *Acta Cryst.* **E62**, o780–o782.  
Rodrigues, V. Z., Foro, S. & Gowda, B. T. (2011). *Acta Cryst.* **E67**, o2648.  
Savitha, M. B. & Gowda, B. T. (2006). *Z. Naturforsch. Teil A*, **61**, 600–606.  
Sheldrick, G. M. (2008). *Acta Cryst.* **A64**, 112–122.  
Spek, A. L. (2009). *Acta Cryst.* **D65**, 148–155.

**supplementary materials**

*Acta Cryst.* (2011). E67, o2824 [ doi:10.1107/S1600536811039274 ]

## 2,4-Dichloro-*N*-(2,4-dimethylphenyl)benzenesulfonamide

V. Z. Rodrigues, S. Foro and B. T. Gowda

### Comment

Several biologically important compounds contain the sulfonamide moiety. The hydrogen bonding preferences of sulfonamides have been investigated (Adsmond & Grant, 2001). As part of our studies on the substituent effects on the structures and other aspects of *N*-(aryl)-amides (Arjunan *et al.*, 2004; Gowda *et al.*, 2000), *N*-(aryl)-methanesulfonamides (Gowda *et al.*, 2007) and *N*-(aryl)-arylsulfonamides (Gowda *et al.*, 2005; Rodrigues *et al.*, 2011), in the present work, the crystal structure of 2,4-dichloro-*N*-(2,4-dimethylphenyl)-benzenesulfonamide (I) has been determined (Fig. 1).

The molecule is bent at the S atom with C—SO<sub>2</sub>—NH—C torsion angle of -71.38 (39)°, compared to the value of 67.45 (17)° in 4-chloro-2-methyl-*N*-(2,4-dimethylphenyl)benzenesulfonamide (II) (Rodrigues *et al.*, 2011). The sulfonyl and the aniline benzene rings are tilted relative to each other by 44.6 (1)°, compared to the value of 44.5 (1)° in (II).

The other bond parameters in (I) are similar to those observed in (II) and other aryl sulfonamides (Perlovich *et al.*, 2006; Gelbrich *et al.*, 2007).

In the crystal structure, the pairs of intermolecular N—H...O hydrogen bonds (Table 1) link the molecules into inversion-related dimers. Part of the crystal structure is shown in Fig. 2.

### Experimental

The solution of 1,3-dichlorobenzene (10 ml) in chloroform (40 ml) was treated dropwise with chlorosulfonic acid (25 ml) at 0 °C. After the initial evolution of hydrogen chloride subsided, the reaction mixture was brought to room temperature and poured into crushed ice in a beaker. The chloroform layer was separated, washed with cold water and allowed to evaporate slowly. The residual 2,4-dichlorobenzenesulfonylchloride was treated with 2,4-dimethylaniline in the stoichiometric ratio and boiled for ten minutes. The reaction mixture was then cooled to room temperature and added to ice cold water (100 ml). The resultant solid 2,4-dichloro-*N*-(2,4-dimethylphenyl)-benzenesulfonamide was filtered under suction and washed thoroughly with cold water. It was then recrystallized to constant melting point from dilute ethanol. The purity of the compound was checked and characterized by recording its infrared and NMR spectra (Savitha & Gowda, 2006).

Plate like light pink single crystals used in X-ray diffraction studies were grown in ethanolic solution by slow evaporation at room temperature.

### Refinement

The H atoms of the NH groups were located in a difference map and later restrained to N—H = 0.86 (2) Å. The other H atoms were positioned with idealized geometry using a riding model with the aromatic C—H = 0.93 Å and methyl C—H = 0.96 Å. All H atoms were refined with isotropic displacement parameters. The  $U_{\text{iso}}(\text{H})$  values were set at  $1.2U_{\text{eq}}(\text{C-aromatic, N})$  and  $1.5U_{\text{eq}}(\text{C-methyl})$ .

## Figures

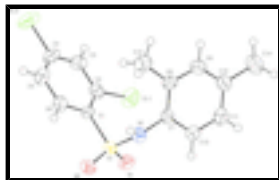


Fig. 1. Molecular structure of the title compound, showing the atom labelling scheme and displacement ellipsoids are drawn at the 50% probability level.

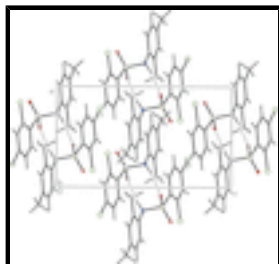


Fig. 2. Molecular packing of (I) with hydrogen bonding shown as dashed lines.

## 2,4-Dichloro-*N*-(2,4-dimethylphenyl)benzenesulfonamide

### Crystal data

$C_{14}H_{13}Cl_2NO_2S$

$M_r = 330.21$

Monoclinic,  $P2_1/n$

Hall symbol:  $-P\ 2yn$

$a = 8.2127\ (7)\ \text{\AA}$

$b = 12.619\ (1)\ \text{\AA}$

$c = 14.284\ (1)\ \text{\AA}$

$\beta = 90.434\ (8)^\circ$

$V = 1480.3\ (2)\ \text{\AA}^3$

$Z = 4$

$F(000) = 680$

$D_x = 1.482\ \text{Mg m}^{-3}$

Mo  $K\alpha$  radiation,  $\lambda = 0.71073\ \text{\AA}$

Cell parameters from 1307 reflections

$\theta = 2.9\text{--}28.1^\circ$

$\mu = 0.58\ \text{mm}^{-1}$

$T = 293\ \text{K}$

Plate, light pink

$0.28 \times 0.18 \times 0.04\ \text{mm}$

### Data collection

Oxford Diffraction Xcalibur diffractometer with a Sapphire CCD detector

Radiation source: fine-focus sealed tube graphite

Rotation method data acquisition using  $\omega$  scans

Absorption correction: multi-scan (*CrysAlis RED*; Oxford Diffraction, 2009)

$T_{\min} = 0.855$ ,  $T_{\max} = 0.977$

5678 measured reflections

3007 independent reflections

1908 reflections with  $I > 2\sigma(I)$

$R_{\text{int}} = 0.038$

$\theta_{\max} = 26.4^\circ$ ,  $\theta_{\min} = 2.9^\circ$

$h = -9 \rightarrow 10$

$k = -15 \rightarrow 15$

$l = -17 \rightarrow 11$

### Refinement

Refinement on  $F^2$

Least-squares matrix: full

Primary atom site location: structure-invariant direct methods

Secondary atom site location: difference Fourier map

$$R[F^2 > 2\sigma(F^2)] = 0.075$$

$$wR(F^2) = 0.143$$

$$S = 1.20$$

3007 reflections

186 parameters

1 restraint

Hydrogen site location: inferred from neighbouring sites

H atoms treated by a mixture of independent and constrained refinement

$$w = 1/[\sigma^2(F_o^2) + (0.0245P)^2 + 3.0449P]$$

$$\text{where } P = (F_o^2 + 2F_c^2)/3$$

$$(\Delta/\sigma)_{\max} < 0.001$$

$$\Delta\rho_{\max} = 0.40 \text{ e } \text{\AA}^{-3}$$

$$\Delta\rho_{\min} = -0.41 \text{ e } \text{\AA}^{-3}$$

### Special details

**Geometry.** All e.s.d.'s (except the e.s.d. in the dihedral angle between two l.s. planes) are estimated using the full covariance matrix. The cell e.s.d.'s are taken into account individually in the estimation of e.s.d.'s in distances, angles and torsion angles; correlations between e.s.d.'s in cell parameters are only used when they are defined by crystal symmetry. An approximate (isotropic) treatment of cell e.s.d.'s is used for estimating e.s.d.'s involving l.s. planes.

**Refinement.** Refinement of  $F^2$  against ALL reflections. The weighted  $R$ -factor  $wR$  and goodness of fit  $S$  are based on  $F^2$ , conventional  $R$ -factors  $R$  are based on  $F$ , with  $F$  set to zero for negative  $F^2$ . The threshold expression of  $F^2 > \sigma(F^2)$  is used only for calculating  $R$ -factors(gt) *etc.* and is not relevant to the choice of reflections for refinement.  $R$ -factors based on  $F^2$  are statistically about twice as large as those based on  $F$ , and  $R$ -factors based on ALL data will be even larger.

### Fractional atomic coordinates and isotropic or equivalent isotropic displacement parameters ( $\text{\AA}^2$ )

|      | $x$         | $y$        | $z$        | $U_{\text{iso}}^*/U_{\text{eq}}$ |
|------|-------------|------------|------------|----------------------------------|
| C1   | 0.0688 (5)  | 0.1655 (3) | 0.3481 (3) | 0.0296 (10)                      |
| C2   | 0.1271 (5)  | 0.2584 (4) | 0.3079 (3) | 0.0343 (11)                      |
| C3   | 0.0195 (6)  | 0.3363 (4) | 0.2776 (3) | 0.0394 (12)                      |
| H3   | 0.0583      | 0.3987     | 0.2513     | 0.047*                           |
| C4   | -0.1440 (6) | 0.3202 (4) | 0.2870 (3) | 0.0405 (12)                      |
| C5   | -0.2059 (6) | 0.2293 (4) | 0.3258 (3) | 0.0411 (12)                      |
| H5   | -0.3177     | 0.2198     | 0.3315     | 0.049*                           |
| C6   | -0.0994 (5) | 0.1527 (4) | 0.3560 (3) | 0.0358 (11)                      |
| H6   | -0.1401     | 0.0908     | 0.3824     | 0.043*                           |
| C7   | 0.3390 (5)  | 0.1826 (4) | 0.5282 (3) | 0.0315 (10)                      |
| C8   | 0.2812 (5)  | 0.2800 (4) | 0.5595 (3) | 0.0353 (11)                      |
| C9   | 0.3947 (6)  | 0.3572 (4) | 0.5828 (3) | 0.0430 (12)                      |
| H9   | 0.3573      | 0.4223     | 0.6043     | 0.052*                           |
| C10  | 0.5609 (6)  | 0.3417 (4) | 0.5755 (3) | 0.0405 (12)                      |
| C11  | 0.6145 (6)  | 0.2437 (4) | 0.5452 (3) | 0.0422 (12)                      |
| H11  | 0.7257      | 0.2309     | 0.5404     | 0.051*                           |
| C12  | 0.5057 (6)  | 0.1650 (4) | 0.5221 (3) | 0.0394 (12)                      |
| H12  | 0.5439      | 0.0994     | 0.5022     | 0.047*                           |
| C13  | 0.1017 (6)  | 0.3029 (5) | 0.5700 (4) | 0.0566 (15)                      |
| H13A | 0.0528      | 0.2493     | 0.6083     | 0.068*                           |
| H13B | 0.0504      | 0.3032     | 0.5094     | 0.068*                           |
| H13C | 0.0878      | 0.3709     | 0.5990     | 0.068*                           |
| C14  | 0.6799 (7)  | 0.4288 (4) | 0.6014 (4) | 0.0625 (16)                      |

## supplementary materials

---

|      |               |              |              |            |
|------|---------------|--------------|--------------|------------|
| H14A | 0.7536        | 0.4036       | 0.6488       | 0.075*     |
| H14B | 0.6212        | 0.4890       | 0.6247       | 0.075*     |
| H14C | 0.7403        | 0.4492       | 0.5470       | 0.075*     |
| N1   | 0.2303 (5)    | 0.0970 (3)   | 0.5054 (3)   | 0.0353 (9) |
| H1N  | 0.147 (4)     | 0.086 (4)    | 0.540 (3)    | 0.042*     |
| O1   | 0.3411 (4)    | 0.0563 (3)   | 0.3481 (2)   | 0.0431 (8) |
| O2   | 0.0892 (4)    | -0.0289 (2)  | 0.4037 (2)   | 0.0439 (9) |
| C11  | 0.33286 (15)  | 0.28541 (11) | 0.29353 (11) | 0.0557 (4) |
| C12  | -0.27868 (19) | 0.41792 (12) | 0.24989 (10) | 0.0642 (5) |
| S1   | 0.19166 (14)  | 0.06286 (9)  | 0.39726 (8)  | 0.0333 (3) |

### Atomic displacement parameters ( $\text{\AA}^2$ )

|     | $U^{11}$    | $U^{22}$    | $U^{33}$    | $U^{12}$     | $U^{13}$     | $U^{23}$     |
|-----|-------------|-------------|-------------|--------------|--------------|--------------|
| C1  | 0.032 (2)   | 0.028 (2)   | 0.028 (2)   | 0.005 (2)    | -0.0061 (19) | 0.0004 (19)  |
| C2  | 0.036 (3)   | 0.036 (3)   | 0.032 (3)   | -0.003 (2)   | 0.002 (2)    | -0.003 (2)   |
| C3  | 0.055 (3)   | 0.031 (3)   | 0.032 (3)   | 0.004 (2)    | 0.000 (2)    | 0.006 (2)    |
| C4  | 0.043 (3)   | 0.048 (3)   | 0.031 (3)   | 0.019 (2)    | -0.004 (2)   | 0.001 (2)    |
| C5  | 0.033 (3)   | 0.054 (3)   | 0.037 (3)   | 0.005 (2)    | 0.000 (2)    | 0.004 (2)    |
| C6  | 0.035 (3)   | 0.037 (3)   | 0.035 (3)   | -0.003 (2)   | -0.001 (2)   | 0.005 (2)    |
| C7  | 0.035 (2)   | 0.033 (3)   | 0.026 (2)   | -0.002 (2)   | -0.0066 (19) | 0.003 (2)    |
| C8  | 0.037 (3)   | 0.038 (3)   | 0.031 (3)   | 0.007 (2)    | -0.001 (2)   | -0.002 (2)   |
| C9  | 0.050 (3)   | 0.036 (3)   | 0.043 (3)   | 0.006 (2)    | 0.000 (2)    | -0.006 (2)   |
| C10 | 0.048 (3)   | 0.036 (3)   | 0.037 (3)   | -0.006 (2)   | -0.008 (2)   | 0.004 (2)    |
| C11 | 0.030 (2)   | 0.053 (3)   | 0.044 (3)   | 0.000 (2)    | -0.002 (2)   | 0.000 (3)    |
| C12 | 0.038 (3)   | 0.036 (3)   | 0.043 (3)   | 0.005 (2)    | -0.006 (2)   | -0.004 (2)   |
| C13 | 0.043 (3)   | 0.062 (4)   | 0.065 (4)   | 0.010 (3)    | 0.002 (3)    | -0.015 (3)   |
| C14 | 0.065 (4)   | 0.052 (4)   | 0.070 (4)   | -0.016 (3)   | -0.010 (3)   | 0.002 (3)    |
| N1  | 0.035 (2)   | 0.037 (2)   | 0.034 (2)   | -0.0042 (19) | -0.0019 (17) | 0.0029 (18)  |
| O1  | 0.0390 (19) | 0.044 (2)   | 0.046 (2)   | 0.0111 (17)  | -0.0005 (15) | -0.0042 (17) |
| O2  | 0.051 (2)   | 0.0267 (18) | 0.054 (2)   | -0.0046 (16) | -0.0099 (17) | 0.0003 (15)  |
| C11 | 0.0384 (7)  | 0.0538 (9)  | 0.0749 (10) | -0.0073 (6)  | 0.0043 (6)   | 0.0165 (7)   |
| C12 | 0.0728 (10) | 0.0639 (10) | 0.0556 (9)  | 0.0386 (8)   | -0.0043 (7)  | 0.0067 (7)   |
| S1  | 0.0363 (6)  | 0.0271 (6)  | 0.0365 (7)  | 0.0036 (5)   | -0.0052 (5)  | -0.0008 (5)  |

### Geometric parameters ( $\text{\AA}$ , $^\circ$ )

|        |           |          |           |
|--------|-----------|----------|-----------|
| C1—C2  | 1.392 (6) | C9—C10   | 1.383 (6) |
| C1—C6  | 1.396 (6) | C9—H9    | 0.9300    |
| C1—S1  | 1.783 (4) | C10—C11  | 1.384 (7) |
| C2—C3  | 1.389 (6) | C10—C14  | 1.515 (7) |
| C2—C11 | 1.737 (4) | C11—C12  | 1.375 (6) |
| C3—C4  | 1.365 (6) | C11—H11  | 0.9300    |
| C3—H3  | 0.9300    | C12—H12  | 0.9300    |
| C4—C5  | 1.374 (7) | C13—H13A | 0.9600    |
| C4—C12 | 1.737 (5) | C13—H13B | 0.9600    |
| C5—C6  | 1.370 (6) | C13—H13C | 0.9600    |
| C5—H5  | 0.9300    | C14—H14A | 0.9600    |
| C6—H6  | 0.9300    | C14—H14B | 0.9600    |

|              |            |                 |            |
|--------------|------------|-----------------|------------|
| C7—C12       | 1.391 (6)  | C14—H14C        | 0.9600     |
| C7—C8        | 1.392 (6)  | N1—S1           | 1.632 (4)  |
| C7—N1        | 1.437 (6)  | N1—H1N          | 0.855 (19) |
| C8—C9        | 1.387 (6)  | O1—S1           | 1.421 (3)  |
| C8—C13       | 1.511 (6)  | O2—S1           | 1.435 (3)  |
| C2—C1—C6     | 118.4 (4)  | C11—C10—C14     | 121.2 (5)  |
| C2—C1—S1     | 125.4 (3)  | C12—C11—C10     | 120.9 (4)  |
| C6—C1—S1     | 116.2 (3)  | C12—C11—H11     | 119.6      |
| C3—C2—C1     | 120.3 (4)  | C10—C11—H11     | 119.6      |
| C3—C2—C11    | 116.2 (4)  | C11—C12—C7      | 120.5 (4)  |
| C1—C2—C11    | 123.5 (4)  | C11—C12—H12     | 119.7      |
| C4—C3—C2     | 119.2 (4)  | C7—C12—H12      | 119.7      |
| C4—C3—H3     | 120.4      | C8—C13—H13A     | 109.5      |
| C2—C3—H3     | 120.4      | C8—C13—H13B     | 109.5      |
| C3—C4—C5     | 122.1 (4)  | H13A—C13—H13B   | 109.5      |
| C3—C4—C12    | 119.3 (4)  | C8—C13—H13C     | 109.5      |
| C5—C4—C12    | 118.7 (4)  | H13A—C13—H13C   | 109.5      |
| C6—C5—C4     | 118.6 (4)  | H13B—C13—H13C   | 109.5      |
| C6—C5—H5     | 120.7      | C10—C14—H14A    | 109.5      |
| C4—C5—H5     | 120.7      | C10—C14—H14B    | 109.5      |
| C5—C6—C1     | 121.5 (4)  | H14A—C14—H14B   | 109.5      |
| C5—C6—H6     | 119.3      | C10—C14—H14C    | 109.5      |
| C1—C6—H6     | 119.3      | H14A—C14—H14C   | 109.5      |
| C12—C7—C8    | 120.0 (4)  | H14B—C14—H14C   | 109.5      |
| C12—C7—N1    | 118.4 (4)  | C7—N1—S1        | 121.9 (3)  |
| C8—C7—N1     | 121.6 (4)  | C7—N1—H1N       | 119 (3)    |
| C9—C8—C7     | 117.9 (4)  | S1—N1—H1N       | 110 (3)    |
| C9—C8—C13    | 119.7 (4)  | O1—S1—O2        | 119.6 (2)  |
| C7—C8—C13    | 122.4 (4)  | O1—S1—N1        | 108.7 (2)  |
| C10—C9—C8    | 123.0 (5)  | O2—S1—N1        | 105.2 (2)  |
| C10—C9—H9    | 118.5      | O1—S1—C1        | 109.6 (2)  |
| C8—C9—H9     | 118.5      | O2—S1—C1        | 106.4 (2)  |
| C9—C10—C11   | 117.8 (5)  | N1—S1—C1        | 106.6 (2)  |
| C9—C10—C14   | 121.0 (5)  |                 |            |
| C6—C1—C2—C3  | 0.7 (6)    | C8—C9—C10—C11   | -1.2 (7)   |
| S1—C1—C2—C3  | -175.5 (3) | C8—C9—C10—C14   | 179.7 (5)  |
| C6—C1—C2—C11 | 179.9 (3)  | C9—C10—C11—C12  | 0.8 (7)    |
| S1—C1—C2—C11 | 3.7 (6)    | C14—C10—C11—C12 | 179.9 (5)  |
| C1—C2—C3—C4  | -0.6 (7)   | C10—C11—C12—C7  | 0.4 (7)    |
| C11—C2—C3—C4 | -179.9 (4) | C8—C7—C12—C11   | -1.2 (7)   |
| C2—C3—C4—C5  | 0.2 (7)    | N1—C7—C12—C11   | -178.6 (4) |
| C2—C3—C4—C12 | 179.6 (4)  | C12—C7—N1—S1    | -76.9 (5)  |
| C3—C4—C5—C6  | 0.1 (7)    | C8—C7—N1—S1     | 105.7 (4)  |
| C12—C4—C5—C6 | -179.3 (4) | C7—N1—S1—O1     | 46.7 (4)   |
| C4—C5—C6—C1  | 0.0 (7)    | C7—N1—S1—O2     | 176.0 (3)  |
| C2—C1—C6—C5  | -0.4 (7)   | C7—N1—S1—C1     | -71.4 (4)  |
| S1—C1—C6—C5  | 176.2 (4)  | C2—C1—S1—O1     | -32.1 (5)  |
| C12—C7—C8—C9 | 0.7 (7)    | C6—C1—S1—O1     | 151.6 (3)  |

## supplementary materials

---

|               |            |             |            |
|---------------|------------|-------------|------------|
| N1—C7—C8—C9   | 178.0 (4)  | C2—C1—S1—O2 | -162.7 (4) |
| C12—C7—C8—C13 | -178.4 (4) | C6—C1—S1—O2 | 21.0 (4)   |
| N1—C7—C8—C13  | -1.1 (7)   | C2—C1—S1—N1 | 85.5 (4)   |
| C7—C8—C9—C10  | 0.5 (7)    | C6—C1—S1—N1 | -90.9 (4)  |
| C13—C8—C9—C10 | 179.7 (5)  |             |            |

### *Hydrogen-bond geometry (Å, °)*

| <i>D</i> —H... <i>A</i>  | <i>D</i> —H | H... <i>A</i> | <i>D</i> ... <i>A</i> | <i>D</i> —H... <i>A</i> |
|--------------------------|-------------|---------------|-----------------------|-------------------------|
| N1—H1N...O2 <sup>i</sup> | 0.86 (2)    | 2.23 (2)      | 3.059 (5)             | 164 (4)                 |

Symmetry codes: (i)  $-x, -y, -z+1$ .



Fig. 1

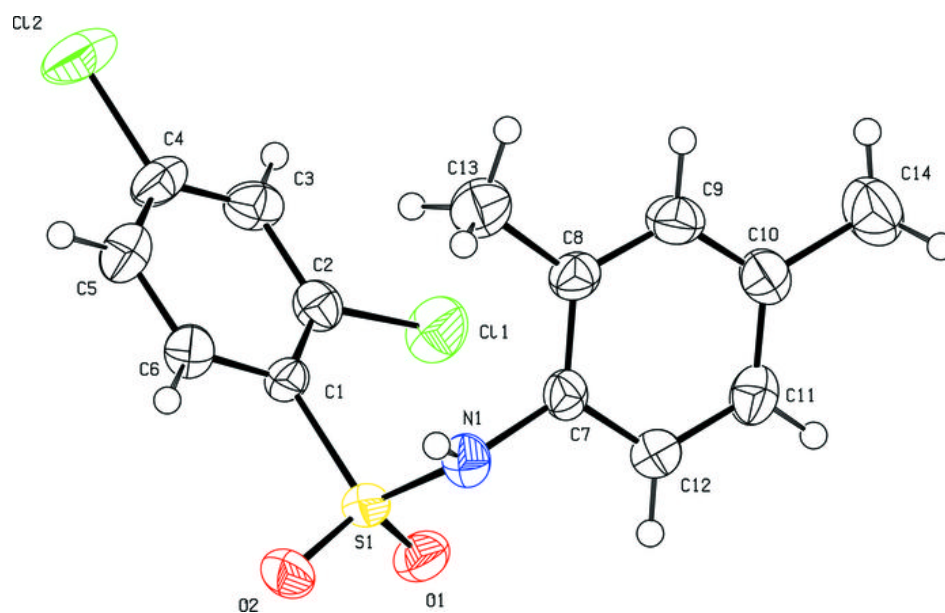


Fig. 2

